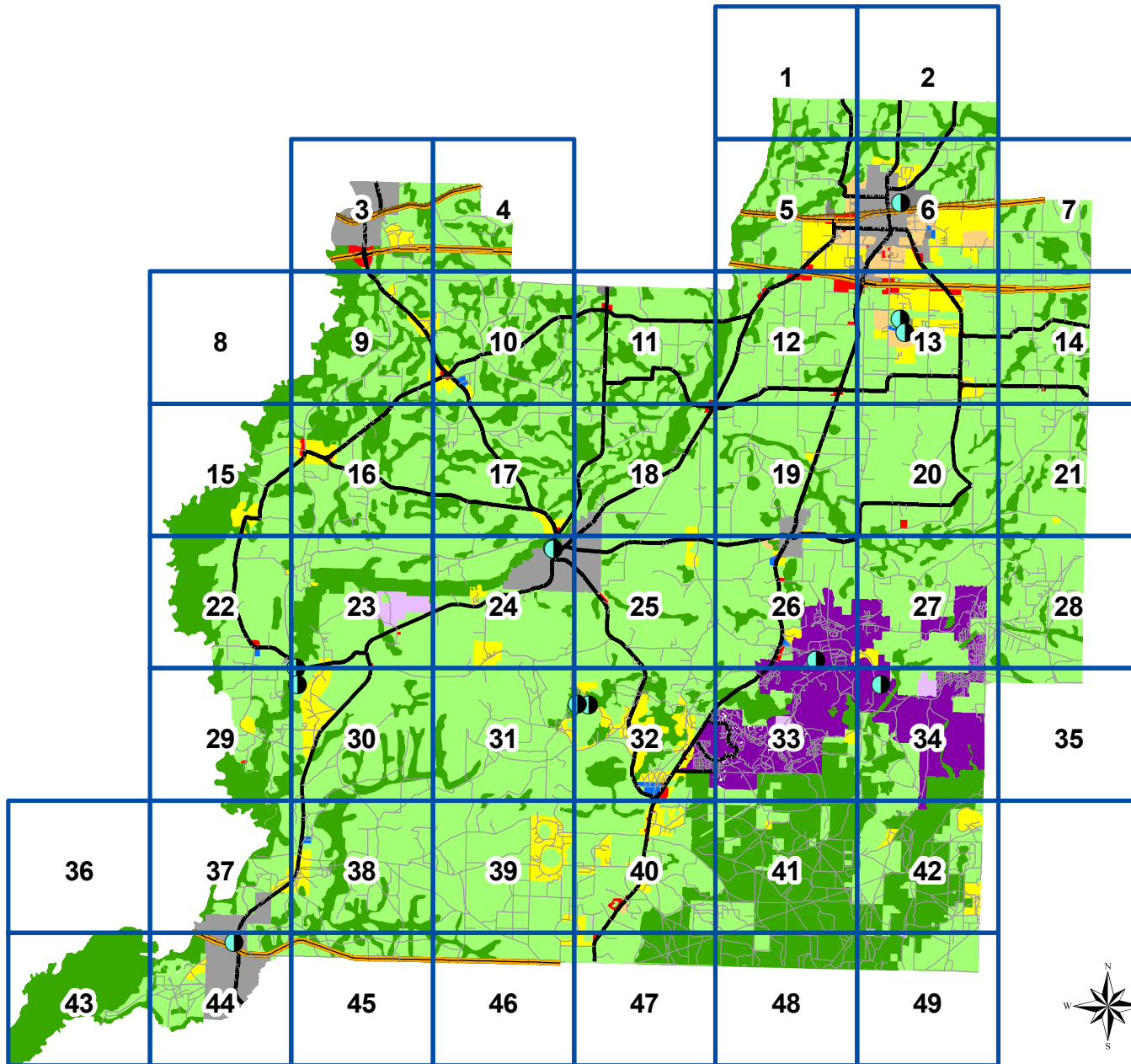


WASHINGTON COUNTY FLORIDA

Future Land Use

Map Page Index



- Wells
- Map Page
- Future Land Use**
- Conservation
- Agricultural/Silvicultural
- Recreation
- Public/Semi-Public
- Low Density Residential
- Low/Medium Density Residential
- High/Medium Density Residential
- Industrial
- Neighborhood Commercial I
- Neighborhood Commercial II
- General Commercial
- Planned Unit Development
- Sunny Hills Mixed Use
- Municipalities

This is the Adopted Future Land Use Map for Washington County Amended 2-28-2008 by Ordinance #2008-02 and converted to GIS on 11-20-2008
Map is Accurate for Planning Purposes Only

